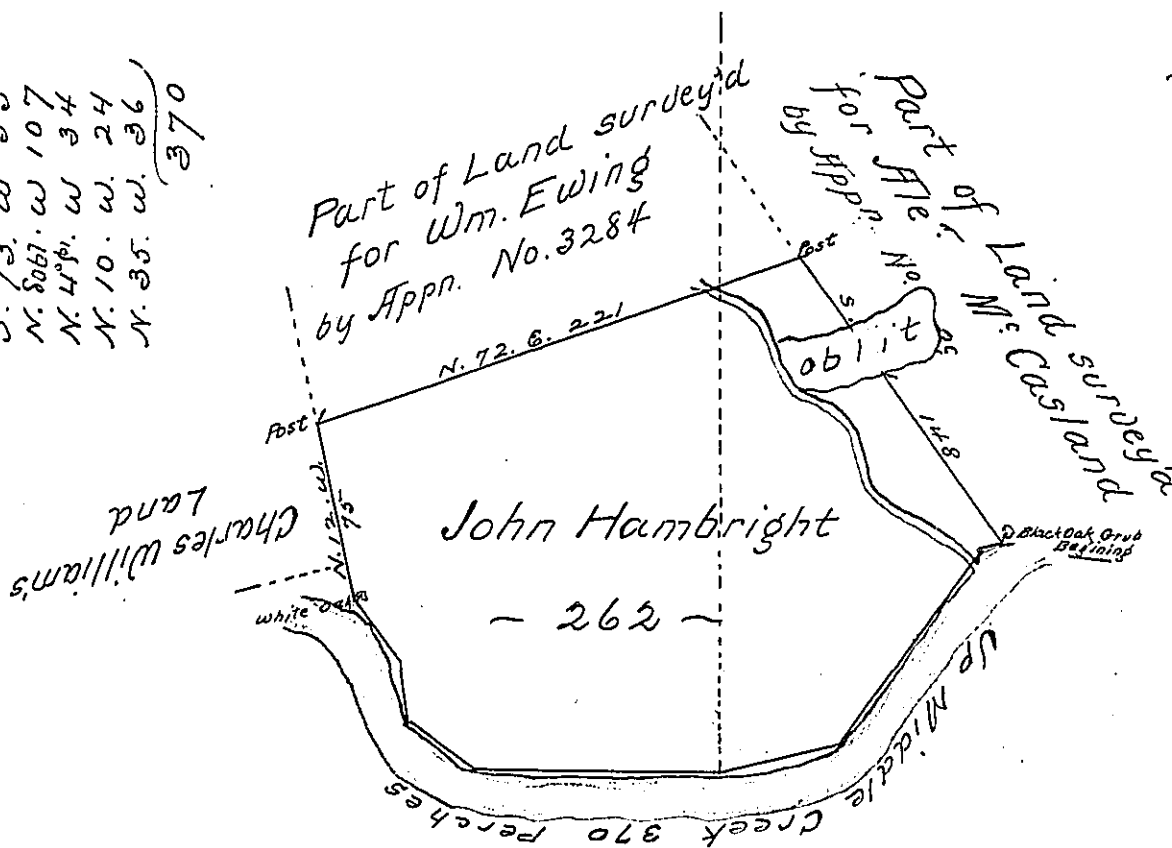


Courses & Distances
up the Creek

S. 79. w. 10
S. 37. w. 106
S. 73. w. 53
N. 86.7. w. 107
N. 4.9. w. 34
N. 10. w. 24
N. 35. w. 36
370



The No 261st of a tract of land called ——— situate on Middle Creek in the county of Northumberland containing two hundred sixty two acres with the usual allow^{ce} for roads.

ob^l.urvey'd the 22^d day of december Anno Dom: 1772 in pursuance of a warrant from the ob^l. Proprietaries to John Hambright, bearing date at ob^l.lad^{ce} the 10th day of July Anno Dom: 1762. But No warrant can be found in the Survey^r Gen^l office

of Pennsylvania }
To John Lukens Esq. S.G. }
p. Wm Maclay D.S.

N.B. The ob^l line which runs thro' the ob^l. Survey, is the division ob^l tween the Lands returned for Wm. Ewing and Alex^r M^r Casla ob^l part of each of those surveys being included in the above one: so that upon the acceptance of this Survey into the office, both of the others must be rejected. The office will judge of the Proffs offered by Mr. Hambright to ascertain the Identity of the Land.

To John Lukens Esq. Wm. Maclay

IN TESTIMONY that the above is a copy of the original remaining on file in the Department of Internal Affairs of Pennsylvania, made conformably to an Act of Assembly approved the 16th day of February, 1833, I have hereunto set my Hand and caused the Seal of said Department to be affixed at Harrisburg, this sixth day of October 1903

Joseph B. Brown
Secretary of Internal Affairs.